

Cleveland Health Sciences  
Library/CASE Interlibrary Loan

ILLiad TN: 65343 \*65343\*

Location: ALLEN Problem Shelf  
Call #:  
ISSN: 1072-3714 (Print)

Journal Title: Menopause (New York,  
N.Y.)

Volume: 10 Issue: 4  
Month/Year: 2003  
Pages: 292-8

Article Author: Dimitrakakis C; Zhou J;  
Wang J; Belanger A; LaBrie F

Article Title: A physiologic role for  
testosterone in limiting es

Imprint:

Received: 9/20/2005 06:07:43 PM

\*18096334\*

Borrower: OHUDAC  
Lending String:  
Patron: Glaser, Rebecca - TN; 72353

Need By: N/A

Regular

ARIEL

Charge

Maxcost: \$15.00

Shipping Address:

Fordham Health Sciences Library, ILL  
Wright State University  
3640 Colonel Glenn Hwy  
Dayton Ohio 45435-0001

Fax: 937-775-2232

Ariel: 130.108.121.58

Phone: 937-775-4110

Notes:

GMR-RL PLEASE ARIEL IF POSSIBLE.  
THANKS

## A physiologic role for testosterone in limiting estrogenic stimulation of the breast

Constantine Dimitrakakis, MD, PhD,<sup>1</sup> Jian Zhou, MD, PhD,<sup>1</sup> Jie Wang, MD,<sup>1</sup>  
Alain Belanger, PhD,<sup>2</sup> Fernand LaBrie, MD,<sup>2</sup> Clara Cheng, PhD,<sup>1</sup> Douglas Powell, PhD,<sup>3</sup> and  
Carolyn Bondy, MD<sup>1</sup>

### ABSTRACT

**Objective:** The normal ovary produces abundant testosterone in addition to estradiol ( $E_2$ ) and progesterone, but usually only the latter two hormones are "replaced" in the treatment of ovarian failure and menopause. Some clinical and genetic evidence suggests, however, that endogenous androgens normally inhibit estrogen-induced mammary epithelial proliferation (MEP) and thereby may protect against breast cancer.

**Design:** To investigate the role of endogenous androgen in regulating mammary epithelial proliferation, normal-cycling rhesus monkeys were treated with flutamide, an androgen receptor antagonist. To evaluate the effect of physiological testosterone (T) supplementation of estrogen replacement therapy, ovariectomized monkeys were treated with  $E_2$ ,  $E_2$  plus progesterone,  $E_2$  plus T, or vehicle.

**Results:** We show that androgen receptor blockade in normal female monkeys results in a more than twofold increase in MEP, indicating that endogenous androgens normally inhibit MEP. Moreover, we show that addition of a small, physiological dose of T to standard estrogen therapy almost completely attenuates estrogen-induced increases in MEP in the ovariectomized monkey, suggesting that the increased breast cancer risk associated with estrogen treatment could be reduced by T supplementation. Testosterone reduces mammary epithelial estrogen receptor (ER)  $\alpha$  and increases ER $\beta$  expression, resulting in a marked reversal of the ER $\alpha/\beta$  ratio found in the estrogen-treated monkey. Moreover, T treatment is associated with a significant reduction in mammary epithelial MYC expression, suggesting that T's antiestrogenic effects at the mammary gland involve alterations in ER signaling to MYC.

**Conclusions:** These findings suggest that treatment with a balanced formulation including all ovarian hormones may prevent or reduce estrogenic cancer risk in the treatment of girls and women with ovarian failure.

**Key words:** Breast cancer – Estrogen – Androgen – Proliferation – Estrogen receptor.

The normal ovary produces estrogen, androgen, and progesterone ( $P_4$ ), with androgen production exceeding that of estrogen by severalfold.<sup>1</sup> "Replacing" estradiol ( $E_2$ ) alone in women with ovarian failure causes uterine hyperplasia

and cancer, an effect that is prevented by the coadministration of  $P_4$ , which opposes estrogen's effect upon uterine cells. Unfortunately,  $P_4$  does not oppose estrogen's stimulatory effect on mammary epithelium, and pharmacologic estrogen therapy with or without  $P_4$  is associated with an increased risk of breast cancer.<sup>2,3</sup> A variety of observations suggest, however, that androgens may suppress the growth of mammary epithelium and potentially inhibit estrogen's cancer-promoting activity in this target tissue. For example, female athletes and transsexuals taking androgens experience atrophy of breast glandular tissue,<sup>4,5</sup> and androgens have been used with success comparable to that of other hormonal

Received October 11, 2002; revised and accepted December 11, 2002.

From the <sup>1</sup>Developmental Endocrinology Branch, National Institute of Child Health and Human Development, National Institutes of Health, Bethesda, Maryland; the <sup>2</sup>Centre de Recherche, Centre Hospitalier, Universitaire de Quebec, Quebec, Canada; and the Veterinary Research Branch, Office of Research Services, National Institutes of Health, Bethesda, Maryland.

Address reprint requests to Carolyn Bondy, MD, Bldg. 10/10N262, 10 Center Drive, Bethesda, MD 20892. E-mail: bondyc@exchange.nih.gov.

therapies in treating breast cancer (reviewed in Labrie et al<sup>6</sup>). Androgen receptor (AR) deletion or blockade is associated with the growth of breasts in men,<sup>7,8</sup> and AR mutations are found in men with breast cancer.<sup>9,10</sup> Moreover, recent evidence points to a genetic linkage between increased cancer risk in women carrying both extended AR-CAG repeats (encoding hypoactive ARs) and BRCA1 mutations or positive family history of breast cancer.<sup>11,12</sup> Moreover, there seems to be a protective effect associated with short AR-CAG alleles encoding higher activity AR,<sup>13</sup> although not all studies find this association.<sup>14</sup>

Girls and women with complete loss of ovarian function due, for example, to gonadal dysgenesis, chemotherapy, or ovariectomy, have a significant reduction in endogenous androgens because the ovary normally produces about 50% of androgens present in the circulation. Despite this deficiency, they are rarely given androgen replacement. Women taking estrogen in the form of oral contraceptives or menopausal hormone replacement therapy (HRT) have not completely lost ovarian function but often experience reduced endogenous androgen activity. This is because estrogen suppresses gonadotropins, leading to reduced ovarian androgenesis, and increases sex hormone-binding globulin levels, resulting in reduced androgen bioavailability, although the extent to which the postmenopausal ovary produces significant amounts of androgen is unclear.<sup>1</sup> Thus, conventional estrogen therapy may promote breast hyperplasia not only through direct estrogen exposure but also through reduction of endogenous androgen effect. The aim of the present study was to evaluate the role of endogenous androgens on mammary epithelial proliferation by blocking the AR in normal cycling monkeys and to determine whether supplementation of conventional estrogen replacement therapy with low-dose, physiological T replacement could inhibit estrogenic stimulation of the breast.

## METHODS

### Effects of AR inhibition with flutamide

Female rhesus monkeys (*Macaca mulatta*) 6 to 13 years of age from the National Institutes of Health Poolesville colony were used in accordance with a protocol approved by the NICHD Animal Care and Use Committee. These monkeys were randomly assigned to two groups ( $n = 6$  or  $7$  per group) receiving vehicle or flutamide (400 mg/kg for 3-month, sustained release; Innovative Research, Sarasota, FL) pellets inserted subcutaneously between their shoulder blades under ketamine anesthesia. The weights of these monkeys

ranged from 5.2 to 6.9 kg (mean of 6.6 kg). All monkeys had at least three regular menstrual cycles before participation in the study and continued to cycle regularly throughout treatment. Three months later, mammary gland biopsies were obtained under ketamine anesthesia and flash frozen. Sections of 10  $\mu$ m thickness were cut at  $-15^{\circ}\text{C}$  and thaw-mounted onto poly-L-lysine coated slides for histochemical analysis. Plasma obtained from these animals was extracted and analyzed using an HPLC system and Sciex API 3000 triple quadrupole mass spectrometer, equipped with TurboIonSpray to measure flutamide. The flutamide level in the group of active treated animals was  $8.21 \pm 0.58$  ng/mL (mean  $\pm$  SEM).

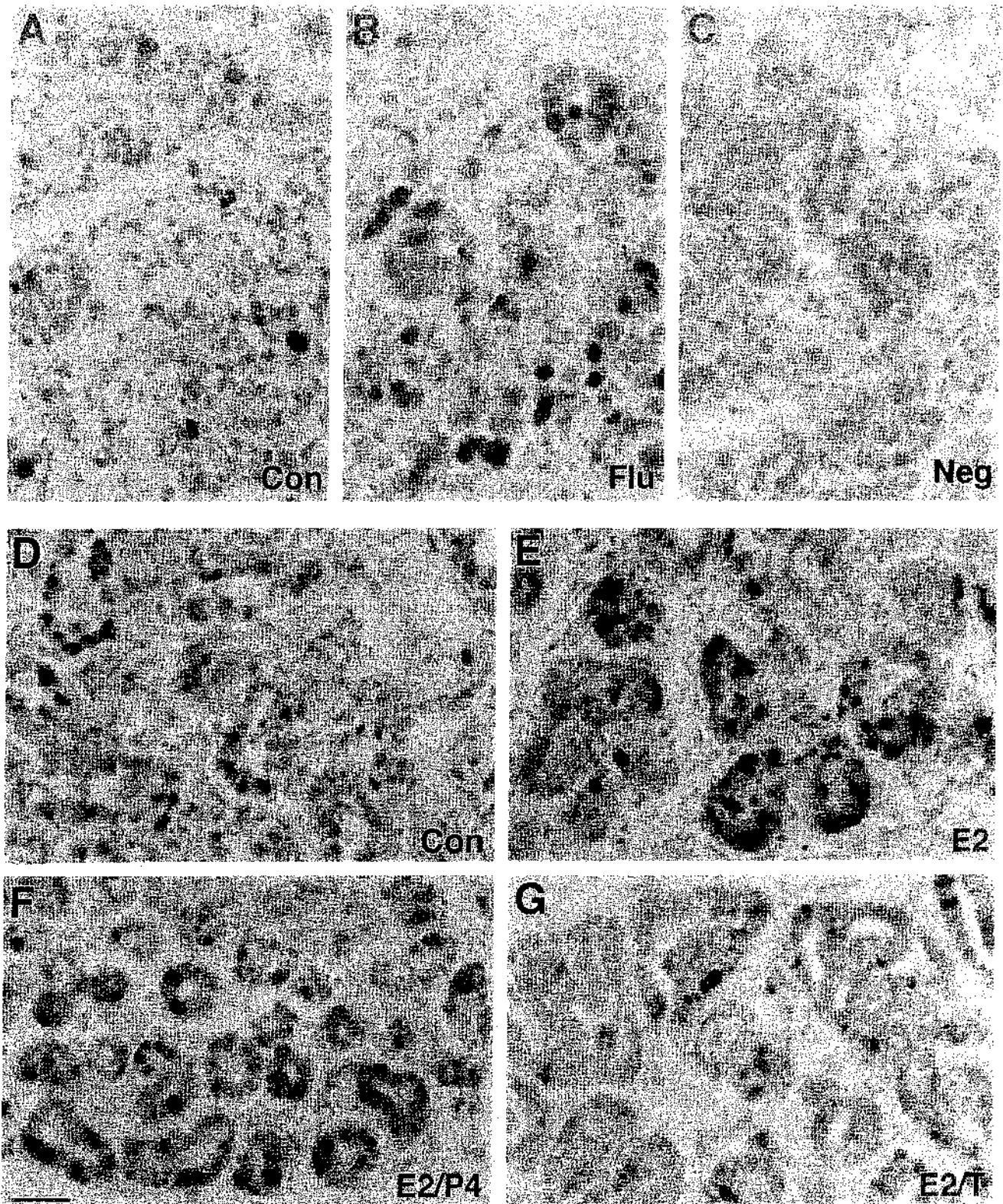
### Effects of physiological hormone replacement

For the hormone replacement experiments, ovariectomized animals were randomly assigned to four groups ( $n = 4$  or  $5$  each) receiving vehicle or 3-day, sustained release hormone-containing pellets inserted subcutaneously between their shoulder blades under ketamine anesthesia. The  $\text{E}_2$  group received  $17\beta$ -estradiol pellets (2.5 mg); the  $\text{E}_2/\text{P}_4$  group received both  $17\beta$ -estradiol (2.5 mg) and  $\text{P}_4$  (10 mg) pellets. The  $\text{E}_2/\text{T}$  group received  $17\beta$ -estradiol (2.5 mg) and T (35  $\mu\text{g}/\text{kg}$ ) pellets. After 3 days, the animals were sedated with ketamine and then euthanized with pentobarbital (65 mg/kg).

### Evaluation of mammary epithelial proliferation

Mammary tissue was removed and processed for immunohistochemical detection of the proliferation-specific Ki-67 antigen, as described elsewhere.<sup>15</sup> To determine the mammary epithelial proliferation index, a blinded observer scored 200 to 300 nuclei per section microscopically. Two to three sections were scored to obtain mean values for each animal.

ER $\alpha$ , MYC (Novocastra from Vector, Burlingame, CA; dilutions 1/40 and 1/200, respectively) and ER $\beta$  (GenTex, San Antonio, TX; concentration 5  $\mu\text{g}/\text{mL}$ ) monoclonal antibodies were used for the immunohistochemical detection of the cognate antigens in frozen mammary tissue sections from the present study and from similar experimental groups from a previous study,<sup>16</sup> following the same protocol used for Ki67. ER expression was quantified as percentage of positive nuclei after evaluating approximately 1,000 cells per animal, as described for Ki67. MYC immunostaining was predominantly cytoplasmic and rather widespread in mammary epithelial cells, so the relative intensity of the cytoplasmic staining was graded, using a scale of 1



**FIG. 1.** Mammary epithelial proliferation shown by Ki67 immunoreactivity. A-C: In intact monkeys treated with vehicle (A) or flutamide (B); a negative control section (C). D-G: in ovariectomized monkeys treated with vehicle (D), estradiol (E), estradiol plus progesterone (F), and estradiol plus testosterone (G). Scale bar, 40  $\mu$ m.

TABLE 1. Sex steroid levels and mammary epithelial proliferation

Treatment group (n)	E <sub>2</sub> (pg/mL)	P <sub>4</sub> (ng/mL)	T (ng/dL)	Ki67 (%)
Control (5)	<2	0.89 ± 0.13	<10	7.89 ± 1.9
E <sub>2</sub> (4)	256 ± 62	0.61 ± 0.3	<10	30.32 ± 3.7 <sup>a</sup>
E <sub>2</sub> /P <sub>4</sub> (4)	330 ± 98	2.83 ± 0.8	<10	32.19 ± 4.9 <sup>a</sup>
E <sub>2</sub> /T (5)	250 ± 75	0.53 ± 0.1	40 ± 11	16.76 ± 1.6 <sup>b</sup>

E<sub>2</sub> levels show no statistically significant difference between estrogen-treated groups. MEP, as indicated by Ki67 immunohistochemical expression, is significantly increased in the E<sub>2</sub> and E<sub>2</sub>/P<sub>4</sub> groups, compared with the control group; it returns to the control levels in the E<sub>2</sub>/T group. Data are mean ± SE. E<sub>2</sub>, estradiol; P<sub>4</sub>, progesterone; T, testosterone.

<sup>a</sup>P < 0.001 with respect to the control group.

<sup>b</sup>P = 0.07 v control, 0.01 v the E<sub>2</sub> group, and 0.005 v the E<sub>2</sub>/P<sub>4</sub> group.

to 4. Raw data on ER and MYC expression from each animal were normalized to the contemporaneous, vehicle-treated control group means, and normalized data for each treatment group from the two studies were pooled for analysis. A MYC cRNA probe was synthesized from a 250-bp cDNA fragment encoding human MYC obtained from Ambion, Inc. (Austin, TX). Probe synthesis and in situ hybridization protocols have been described in detail previously.<sup>15</sup> The specificity of the in situ hybridization results was confirmed by the hybridization of parallel sections to a sense probe. The hybridization signal overlying mammary epithelium was captured at ×400 using a monochrome video camera and the results analyzed with NIH image v1.57 software as previously described.<sup>15</sup> A blinded observer obtained four to six measurements from two to three mammary tissue sections for each animal.

### Statistical analyses

Data are expressed as group means with standard error. Group means were compared using analysis of variance, and differences were assessed by Fisher's least significant difference test.

## RESULTS

### Effects of AR antagonism

To investigate the role of endogenous androgens in regulating mammary epithelial proliferation, monkeys were treated with flutamide, an AR antagonist.<sup>17</sup> These animals demonstrated regular menstrual cycles before flutamide treatment, and both groups (vehicle, n = 6; flutamide, n = 7) continued regular cycles throughout the 3-month treatment period. The mammary epithelium was biopsied at the end of the third cycle, denoted by appearance of menses. The tissue seemed histologically normal in flutamide-treated animals, but prolifer-

ation determined by expression of the Ki67 antigen (Fig. 1A-C) was increased by twofold (5.1 ± 1.6% in control v 10.56 ± 1.8% in flutamide groups; P = 0.02).

### Effects of physiological hormone replacement

To evaluate the effect of physiological T supplementation of estrogen replacement therapy, ovariectomized monkeys were treated with E<sub>2</sub>, E<sub>2</sub> plus P<sub>4</sub> (E<sub>2</sub>/P<sub>4</sub>), E<sub>2</sub> plus T (E<sub>2</sub>/T), or vehicle. E<sub>2</sub> levels were similar in all E<sub>2</sub>-treated groups (Table 1) in a physiological range of the normal menstrual cycle and were similar to levels in oral contraceptive and HRT regimens. T levels were at the limit of detection in all ovariectomized monkeys save for the E<sub>2</sub>/T group, in which they were in the normal physiologic range for female monkeys and humans (~40 ng/dL). The mammary epithelial proliferation index was increased by approximately 3.5-fold in the E<sub>2</sub>- and E<sub>2</sub>/P<sub>4</sub>-treated groups but was not significantly increased above control in the E<sub>2</sub>/T group (Fig. 1, D-G and Table 1).

In a previous study we found that ERα mRNA was significantly reduced in the mammary epithelium of E<sub>2</sub>/T compared with E<sub>2</sub>-treated animals.<sup>16</sup> In the present work we evaluated ERα and ERβ immunoreactivities and found a significant reduction in mammary epithelial ERα and increase in ERβ expression in E<sub>2</sub>/T groups compared with E<sub>2</sub> alone (Fig. 2A-D and Table 2). This effect by T results in a dramatic reversal of the ERα/ERβ ratio, which is approximately 2.5 in the E<sub>2</sub>-treated group and approximately 0.7 in the E<sub>2</sub>/T group. Because MYC is implicated as a mediator of estrogenic tumorigenesis,<sup>18,19</sup> we analyzed its expression in the different treatment groups, finding that MYC immunostaining was significantly reduced in E<sub>2</sub>/T-treated animals (Fig. 2, E-H and Table 2). Furthermore, MYC expression was positively correlated with ERα expression (P = 0.008 by simple regression analysis). MYC mRNA expression evaluated using in situ hybridization (data not shown) supports the immunohistochemical results, with significant increases in E<sub>2</sub>- and E<sub>2</sub>/P<sub>4</sub>-treated animals (~60%-70% increase compared with control, P < 0.001) and an approximately 50% reduction in E<sub>2</sub>/T-treated animals (P = 0.05) compared with the E<sub>2</sub>- and E<sub>2</sub>/P<sub>4</sub>-treated groups.

## DISCUSSION

Estrogen-induced proliferation of mammary epithelium is thought to underlie the association between estrogen exposure and breast cancer, with total lifetime estrogen exposure constituting the major component of an individual's risk for developing mammary

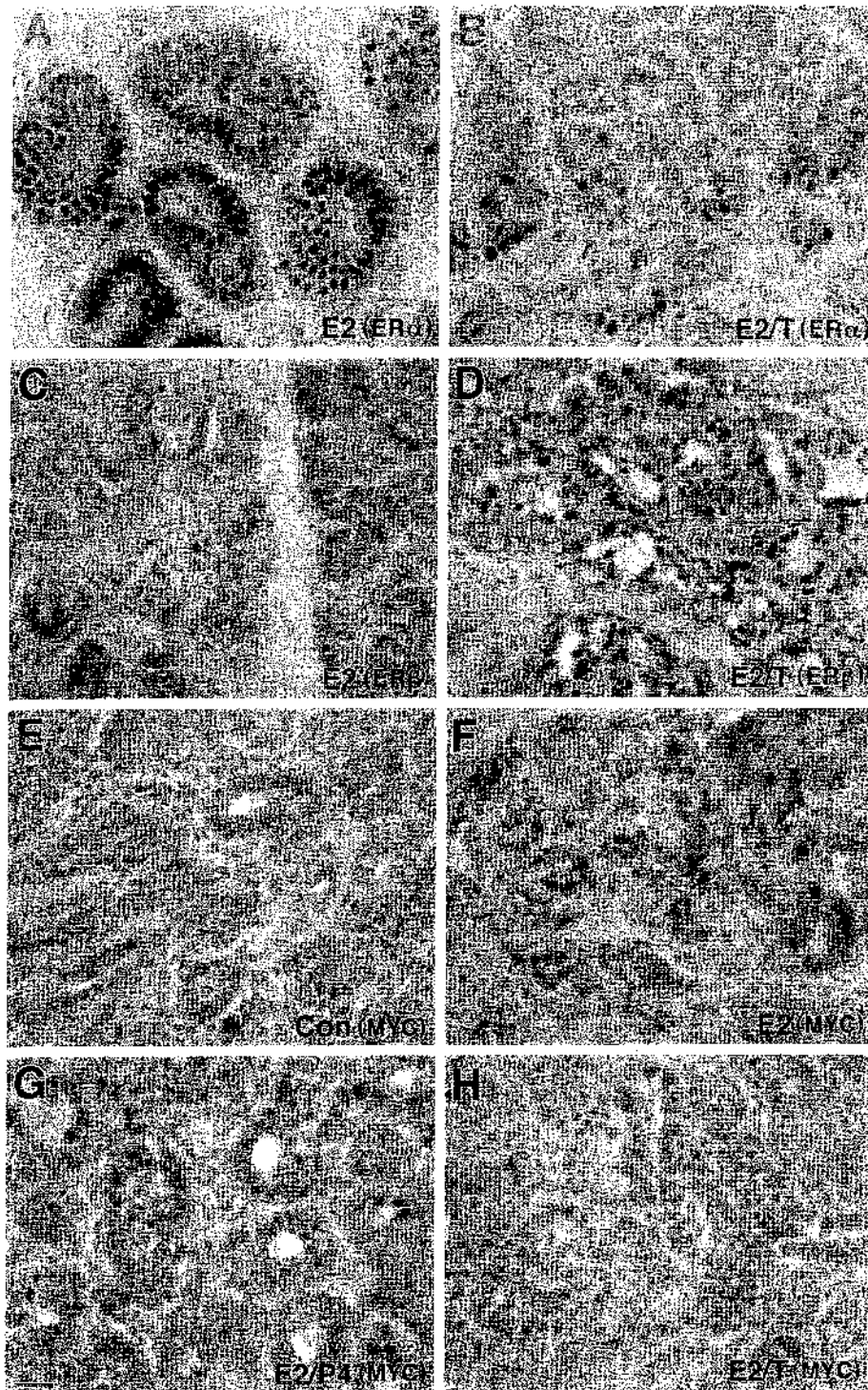


FIG. 2. Effects of E<sub>2</sub> and E<sub>2</sub>/T on mammary epithelial expression of ER $\alpha$  and ER $\beta$  (A-D) and MYC (E-H). Scale bar, 20  $\mu$ m.

neoplasia.<sup>20</sup> The present study provides multiple lines of evidence suggesting that this estrogen exposure risk for breast cancer may be attenuated by androgens. The normal ovary produces abundant androgen for release into the circulation, and androgen levels are substantially higher than estrogens throughout the normal fe-

male lifespan. The importance of androgens in female physiology has been largely overlooked, however, despite recent evidence that these "male" hormones are important for maintaining lean body mass (bone and muscle) and libido in women as well as men.<sup>21,22</sup> Even with these considerations on the role of androgens in

TABLE 2. Estrogen receptors and MYC expression

Treatment group (n)	ER $\alpha$	ER $\beta$	MYC
E <sub>2</sub> (8)	137.2 ± 21.4 <sup>a</sup>	50.1 ± 11 <sup>b</sup>	125 ± 15.9 <sup>c</sup>
E <sub>2</sub> /T (9)	75.4 ± 9	98.9 ± 8.3	50 ± 21.5

Testosterone combined with E<sub>2</sub> significantly decreases ER $\alpha$  and MYC and increases ER $\beta$  immunoreexpression compared with E<sub>2</sub> alone. Data are means ± SE. E<sub>2</sub>, estradiol; T, testosterone.

<sup>a</sup>P = 0.02 compared with E<sub>2</sub>/T group.

<sup>b</sup>P = 0.002 with respect to E<sub>2</sub>/T group.

<sup>c</sup>P = 0.04 with respect to E<sub>2</sub>/T group.

women, hormone therapy for girls and women generally includes only estrogen and progesterin, a treatment with the unintended effect of reducing net androgen activity, which may augment the risk of estrogen exposure. The demonstration in the present study that administration of an AR antagonist enhances mammary epithelial proliferation in normal female monkeys confirms that endogenous androgens normally inhibit this proliferation. This study has also shown that restoration of normal circulating T levels in E<sub>2</sub>-treated ovariectomized animals largely prevents the estrogen-induced increase in mammary epithelial proliferation, suggesting that androgen supplementation of HRT regimens may have similar protective effects in humans. Supporting this view, a recent study found that a low-dose oral contraceptive induced robust mammary epithelial proliferation in rats, but that addition of methyltestosterone to the therapy significantly suppressed the proliferation.<sup>23</sup> It is important to keep in mind, however, that species-specific differences in steroid production and metabolism may influence net steroid effect upon mammary and other tissues.

It is noteworthy that this study also reveals clues about the mechanisms whereby androgen limits E<sub>2</sub> effects at the breast. Androgens such as T and DHT function by binding to the intracellular AR, a member of the nuclear hormone receptor super family comprising classic DNA-binding, hormone-binding and activation domains. AR expression is present in normal mammary epithelium and in some breast cancer specimens and cell lines.<sup>16,24-26</sup> A major androgenic effect demonstrated in this *in vivo* study is the down-regulation of ER $\alpha$  and up-regulation of ER $\beta$  expression, resulting in reversal of the ER $\alpha$ -dominant receptor ratio found in E<sub>2</sub>-treated mammary epithelium. Although both ERs bind E<sub>2</sub>, their signaling pathways and biological outcomes seem different.<sup>27</sup> For example, ER $\alpha$  augments MYC expression and proliferation, whereas ER $\beta$  does not stimulate MYC and may inhibit proliferation.<sup>28</sup> Interestingly, a reciprocal or inverse relationship between expression of these two ERs is also reported in breast

cancer tissues, where ER $\beta$  expression is also inversely correlated with proliferation,<sup>25,30</sup> although one study reports a positive correlation in certain types of tumors.<sup>31</sup> ER $\beta$  expression may be viewed as a good prognostic factor in breast cancer and is speculated to be protective against estrogenic carcinogenesis.<sup>32-34</sup> Hence, a key aspect of androgenic protection of the mammary gland may be alteration of the ER $\alpha$ / $\beta$  ratio in favor of ER $\beta$ , as shown in the present study.

An important consequence of alteration in the ER ratio is down-regulation of E<sub>2</sub>-induced MYC expression. The MYC proto-oncogene induces mammary tumorigenesis,<sup>35</sup> and its amplification is linked with a poor prognosis in breast cancer.<sup>36</sup> The reduction in mammary epithelial MYC expression could be secondary to reduced ER $\alpha$ , supported by our finding of a significant correlation between MYC and ER $\alpha$  expression. Alternatively, it could be a more direct effect of androgen, because an inverse correlation between AR and MYC expression is found in breast cancer tissues.<sup>37</sup> There are likely other mechanisms whereby AR activation inhibits mammary tumorigenesis. As noted above, breast cancer risk in BRCA1-mutation carriers is increased in women with an amplified AR-CAG allele encoding a relatively inactive receptor,<sup>11</sup> raising the intriguing possibility that androgen signaling and BRCA1 pathways may intersect. Supporting this possibility, there are reported interactions between the BRCA1 gene product and AR that augment AR signaling, suggesting that the BRCA1 protein may be an AR coactivator.<sup>38,39</sup>

## CONCLUSIONS

In summary, the present data show that androgens reduce mammary epithelial proliferation and regulate mammary epithelial ER $\alpha$  and ER $\beta$  and MYC expression, suggesting that androgens may protect against breast cancer, by analogy with P<sub>4</sub>'s protective effects upon the uterus. These considerations suggest that physiological estrogen/androgen "replacement" therapy may be beneficial to girls and women with ovarian failure.

## REFERENCES

1. Lobo RA. Androgens in postmenopausal women: production, possible role, and replacement options. *Obstet Gynecol Surv* 2001;56(6):361-376.
2. Schairer C, Lubin J, Troisi R, Sturgeon S, Brinton L, Hoover R. Menopausal estrogen and estrogen-progesterin replacement therapy and breast cancer risk. *JAMA* 2000;283(4):485-491.
3. Ross RK, Paganini-Hill A, Wan PC, Pike MC. Effect of hormone replacement therapy on breast cancer risk: estrogen versus estrogen plus progesterin. *J Natl Cancer Inst* 2000;92(4):328-332.

4. Kerkov P, Stimson GV. Indications of prevalence, practice and effects of anabolic steroid use in Great Britain. *Int J Sports Med* 1997; 18(7):557-562.
5. Burgess UE, Shousha S. An immunohistochemical study of the long-term effects of androgen administration on female-to-male transsexual breasts: a comparison with normal female breast and male breast showing gynecomastia. *J Pathol* 1993;170(1):37-43.
6. Labrie F, Simard J, de Launoit Y, et al. Androgens and breast cancer. *Cancer Detect Prev* 1992;16(1):31-38.
7. Grino PB, Griffin JE, Cussham WG Jr, Wilson JD. A mutation of the androgen receptor associated with partial androgen resistance, familial gynecomastia, and fertility. *J Clin Endocrinol Metab* 1988; 66(4):754-761.
8. Staiman VR, Lowe FC. Tamoxifen for flutamide/finasteride-induced gynecomastia. *Urology* 1997;50(6):929-933.
9. Wooster R, Mangion J, Eccles R, et al. A germline mutation in the androgen receptor gene in two brothers with breast cancer and Reifenstein syndrome. *Nat Genet* 1992;2(2):132-134.
10. Lobaccaro JM, Lumbroso S, Bolon C, et al. Male breast cancer and the androgen receptor gene. *Nat Genet* 1993;5(2):109-110.
11. Rebbeck TR, Kantoff PW, Krithivas K, et al. Modification of BRCA1-associated breast cancer risk by the polymorphic androgen-receptor CAG repeat. *Am J Hum Genet* 1999;64(5):1371-1377.
12. Haiman CA, Brown M, Hankinson SE, et al. The androgen receptor CAG repeat polymorphism and risk of breast cancer in the Nurses' Health Study. *Cancer Res* 2002;62(4):1045-1049.
13. Giguere Y, Dewailly E, Brisson J, et al. Short polyglutamine tracts in the androgen receptor are protective against breast cancer in the general population. *Cancer Res* 2001;61(15):5869-5874.
14. Menin C, Banna GL, De Salvo G, et al. Lack of association between androgen receptor CAG polymorphism and familial breast/ovarian cancer. *Cancer Lett* 2001;168(1):31-36.
15. Zhou J, Anderson K, Bievre M, Ng S, Bondy CA. Primate mammary gland insulin-like growth factor system: cellular localization and regulation by sex steroids. *J Invest Med* 2001;49(1):47-55.
16. Zhou J, Ng S, Adesanya-Famuyiwa O, Anderson K, Bondy CA. Testosterone inhibits estrogen-induced mammary epithelial proliferation and suppresses estrogen receptor expression. *FASEB J* 2000;14(12):1725-1730.
17. Singh SM, Gauthier S, Labrie F. Androgen receptor antagonists (antiandrogens): structure-activity relationships. *Curr Med Chem* 2000;7(2):211-247.
18. Miller TL, Huzel NJ, Davic JR, Murphy LC. C-myc gene chromatin of estrogen receptor positive and negative breast cancer cells. *Mol Cell Endocrinol* 1993;91:83-89.
19. Prall OW, Rogan EM, Musgrove EA, Watts CK, Sutherland RL. c-Myc or cyclin D1 mimics estrogen effects on cyclin E-Cdk2 activation and cell cycle reentry. *Mol Cell Biol* 1998;18(8):4499-4508.
20. Henderson BE, Feigelson HS. Hormonal carcinogenesis. *Carcinogenesis* 2000;21(3):427-433.
21. Davis S. Androgen replacement in women: a commentary. *J Clin Endocrinol Metab* 1999;84(6):1886-1891.
22. Shifren JL, Braunstein GD, Simon JA, et al. Transdermal testosterone treatment in women with impaired sexual function after oophorectomy. *N Engl J Med* 2000;343(10):682-688.
23. Jayo MJ, Register TC, Hughes CL, et al. Effects of an oral contraceptive combination with or without androgen on mammary tissues: a study in rats. *J Soc Gynecol Invest* 2000;7(4):257-265.
24. Hall RE, Aspinall JO, Horsfall DJ, et al. Expression of the androgen receptor and an androgen-responsive protein, apolipoprotein B, in human breast cancer. *Br J Cancer* 1996;74(3):1175-1180.
25. Isola JJ. Immunohistochemical demonstration of androgen receptor in breast cancer and its relationship to other prognostic factors. *J Pathol* 1993;170(1):31-35.
26. Birrell SN, Bentel JM, Hickey TE, et al. Androgens induce divergent proliferative responses in human breast cancer cell lines. *J Steroid Biochem Mol Biol* 1995;52(5):459-467.
27. Pettcrsson K, Gustafsson JA. Role of androgen receptor  $\beta$  in estrogen action. *Annu Rev Physiol* 2001;63:165-192.
28. Lazennec G, Bresson D, Lucas A, Chauveau C, Vignon F. ER  $\beta$  inhibits proliferation and invasion of breast cancer cells. *Endocrinology* 2001;142(9):4120-4130.
29. Bieche I, Parfait B, Laurondeau Y, Girault I, Vidaud M, Lidereau R. Quantification of estrogen receptor alpha and  $\beta$  expression in sporadic breast cancer. *Oncogene* 2001;20(56):8109-8115.
30. Roger P, Sahla ME, Makela S, Gustafsson JA, Ballet P, Rochefort H. Decreased expression of estrogen receptor  $\beta$  protein in proliferative preinvasive mammary tumors. *Cancer Res* 2001;61(6):2537-2541.
31. Jensen EV, Cheng G, Palmieri C, et al. Estrogen receptors and proliferation markers in primary and recurrent breast cancer. *Proc Natl Acad Sci USA* 2001;98(26):15197-15202.
32. Jarvinen TA, Peltto-Huikko M, Holli K, Isola J. Estrogen receptor beta is coexpressed with ERalpha and PR and associated with nodal status, grade, and proliferation rate in breast cancer. *Am J Pathol* 2000;156(1):29-35.
33. Omoto Y, Inoue S, Ogawa S, et al. Clinical value of the wild-type estrogen receptor  $\beta$  expression in breast cancer. *Cancer Lett* 2001;163(2):207-212.
34. Gustafsson JA, Warner M. Estrogen receptor  $\beta$  in the breast: role in estrogen responsiveness and development of breast cancer. *J Steroid Biochem Mol Biol* 2000;74(5):245-248.
35. D'Cruz CM, Gunther EJ, Boxer RB, et al. c-MYC induces mammary tumorigenesis by means of a preferred pathway involving spontaneous Kras2 mutations. *Nat Med* 2001;7(2):235-239.
36. Deming SL, Nass SJ, Dickson RB, Troock BJ. C-myc amplification in breast cancer: a meta-analysis of its occurrence and prognostic relevance. *Br J Cancer* 2000;83(12):1688-1695.
37. Bieche I, Parfait B, Tozlu S, Lidereau R, Vidaud M. Quantitation of androgen receptor gene expression in sporadic breast tumors by real-time RT-PCR: evidence that MYC is an AR-regulated gene. *Carcinogenesis* 2001;22(9):1521-1526.
38. Park JJ, Irvine RA, Buchanan G, et al. Breast cancer susceptibility gene 1 (BRCA1) is a coactivator of the androgen receptor. *Cancer Res* 2000;60(21):5946-5949.
39. Yeh S, Hu YC, Rahman M, et al. Increase of androgen-induced cell death and androgen receptor transactivation by BRCA1 in prostate cancer cells. *Proc Natl Acad Sci USA* 2000;97(21):11256-11261.